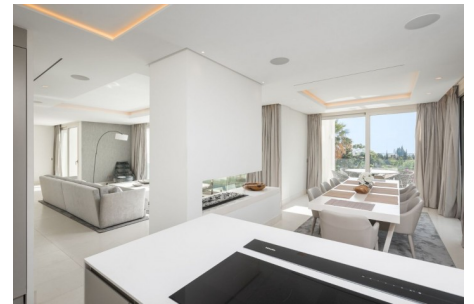


Brand New Cutting-Edge Villa Walking Distance To Puerto Banus..

€1,995,000

4 Bed • 4 Bath • 444 m² Built • 156 m² Terraces • 613 m² Plot





DESCRIPTION

Contemporary brand new villa with sea and mountain views fifteen minute walking distance to Puerto Banús and the beach! The property consists of a bright double-height open-plan living/dining area with fireplace, opening onto a lovely terrace and garden with infinity swimming pool, enjoying the views towards the sea in Puerto Banús and La Concha mountain, fully equipped openplan kitchen with top quality appliances, a bedroom suite with walk-in closet and a guest toilet.

On the upper floor, en-suite master bedroom with dressing area and access to a southwest facing terrace with jacuzzi and commanding views to the Mediterranean coastline, Gibraltar, and the North of Africa, a further en-suite bedroom with walk-in wardrobe and stunning views towards La Concha mountain. The basement offers a double-height ceiling which has a self-contained guest apartment; cinema room, gymnasium with natural light, machinery room, storage and an underground garage with space for three cars.

[Read more online...](#)